



Flower Child Shawl



An advanced beginner / intermediate pattern

© Bun and Bandana Studios 2020

This publication is protected under the [Creative Commons 3.0 License](https://creativecommons.org/licenses/by/3.0/)

Copyright protects this publication, except for reasons as permitted by The Copyright Act 1968, reproduction by whatever means is prohibited without prior written permission.



Flower Child Shawl

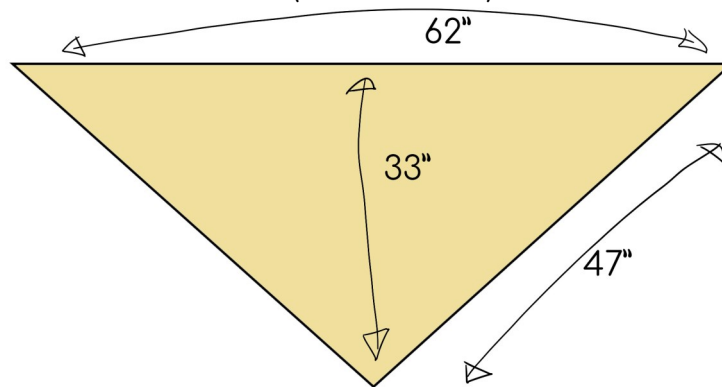
The original shawl was made with Hayfield Spirit DK Acrylic yarn (shade 0400) and a US H-8/ 5mm hook.

This pattern can be easily adapted to use a 4ply yarn, with a US 7/ 4.5mm hook.

If using a yarn cake, I like to make the tassels first (so I can just keep crocheting until I reach the end!). Choose either the centre colour, or carefully unravel the outside colour (replacing the band after!)

The tassel size is 6" (or 15cm) wound 30 times or 4" (or 15 cm), wound 30 times, for the 4ply.

The finished shawl measures 62" x 33" (158cm x 84cm)



Begin with a magic circle, or three chains and slip stitch into the first chain to close the round. Make sure you turn your work after every row.

After every row, the corners will appear to turn up, the following row should pull the shawl back square.

Take care to only place one stitch in the top of the flower stitches (it can sometimes look like there are two stitches there.)

The chart shows the rows to the centre, to complete each row mirror from the dashed line.

The pattern is written in US terms (UK terms are in green)

Stitch Numbers

Row No.	Stitches	Row No.	Stitches	Row No.	Stitches	Row No.	Stitches
Row 1	6 (+ch2)	Row 2	16 (+ch2)	Row 3	24 (+ch2)	Row 4	32 (+ch2)
Row 5	40 (+ch2)	Row 6	48 (+ch2)	Row 7	56 (+ch2)	Row 8	64 (+ch2)
Row 9	72 (+ch2)	Row 10	80 (+ch2)	Row 11	88 (+ch2)	Row 12	96 (+ch2)
Row 13	104 (+ch2)	Row 14	112 (+ch2)	Row 15	120 (+ch2)	Row 16	128 (+ch2)
Row 17	136 (+ch2)	Row 18	144 (+ch2)	Row 19	152 (+ch2)	Row 20	160 (+ch2)
Row 21	168 (+ch2)	Row 22	176 (+ch2)	Row 23	184 (+ch2)	Row 24	192 (+ch2)
Row 25	200 (+ch2)	Row 26	208 (+ch2)	Row 27	216 (+ch2)	Row 28	224 (+ch2)
Row 29	232 (+ch2)	Row 30	240 (+ch2)	Row 31	248 (+ch2)	Row 32	256 (+ch2)
Row 33	264 (+ch2)	Row 34	272 (+ch2)	Row 35	280 (+ch2)	Row 36	288 (+ch2)
Row 37	296 (+ch2)	Row 38	304 (+ch2)	Row 39	312 (+ch2)	Row 40	320 (+ch2)
Row 41	328 (+ch2)	Row 42	336 (+ch2)	Row 43	344 (+ch2)	Row 44	352 (+ch2)
Row 45	360 (+ch2)	Row 46	368 (+ch2)	Row 47	376 (+ch2)	Row 48	384 (+ch2)
Row 49	392 (+ch2)						

Used Stitches & Abbreviations

Symbol

Abbreviations



slst – Slip stitch.



Fpslst – Front post slip stitch.



ch – Chain.



sc picot – Single crochet picot (double crochet picot)



sc – single crochet. (double crochet)



dc – Double crochet. (treble crochet)



dc2tog – Double crochet 2 together. (treble crochet 2 together)



fpdc – Front Post Double Crochet. (front post treble crochet)



bpdc – Back Post Double Crochet. (back post treble crochet)



flower – Flower Stitch (see Special Stitches below).

yo – Yarn over.

Sk—skip

St—stitch



Special Stitches, Flower



2dc into same stitch, rotate work 90 clockwise so 2nd dc is at the top. *(this is now used as the base to attach all of the petals to)*

Ch 3, fpslst around 2nd dc,

Ch 3, fpslst around 2nd dc,

Ch 3.

Rotate work 180 counter clockwise so 1st dc is at the top.

Fpslt around 1st dc,

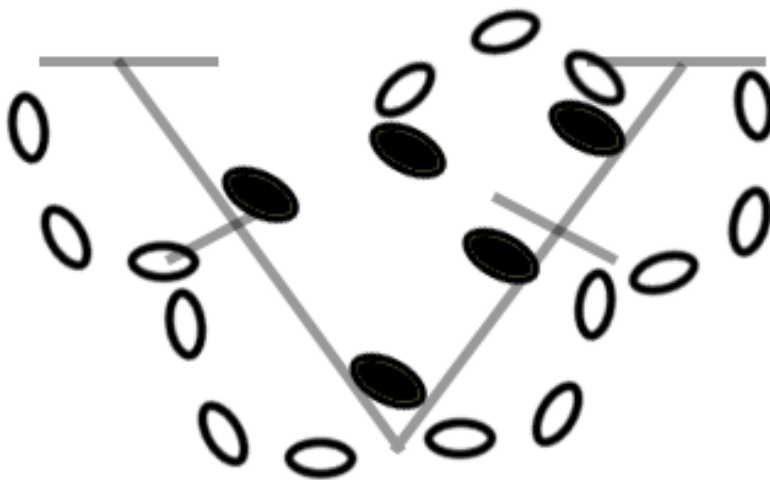
Ch 3, fpslst around 1st dc,

Ch 3.

Rotate work 90 clockwise so it is back to it's normal working direction.

Slst between the 2 dc.

Ch 1 to finish the stitch.



Tip!

Depending on yarn weight, the petals may be a little small, 4 chains can be used instead of 3 to make the petals a little larger.



Stitch Notes

When counting stitches, chains count as stitches!

Starting stitches:

When reading the chart, the first stitch is replaced with whichever starting stitch method you choose to use.

The written pattern uses the chain method.

A first stitch of a Dc (double crochet / **treble crochet**) is replaced with 3 chains



A first stitch of a SC (single crochet/ **double crochet**) is replaced with 2 chains



Note

Be careful on the row after a row of Sc to ensure you place enough stitches in the end stitch! (the ch 2 can be really easy to miss!)

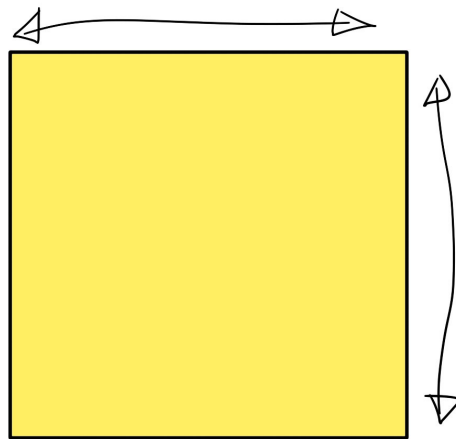


Tension

The size hook is dependent on how tight you crochet, if you tend to crochet with a tight tension, increase the hook size until you achieve the correct size.

Overall the tension is not incredibly important, you may just end up with a slightly smaller shawl!

30 Stitches SC (Dc) 7.5" (19cm)



Materials

Stitch Markers



Crochet hooks
5mm / 4.5mm

Scissors

Yarn - 800m

Yarn Needles



Section 1

Foundation Row.

Either magic circle, or ch 3 and slst to close the loop.

Row 1.

Ch 3, 2 dc into loop, ch 2, 3 dc into loop. Tighten magic circle. Turn.

Row 2.

2 dc into 1st st, 2dc in next 2 sts, 2 dc in ch 2 space, ch 2, 2 dc in ch 2 space, 2 dc in next 2 sts, 2 dc in top of ch 3 from Row 1. Turn.

Row 3.

Ch 3, 1 dc in 1st st, ch 1.

1 dc in next st, *ch 1, sk 1 st, dc in next st* (repeat from * to * twice more)

2 dc in ch 2 space, ch 2, 2 dc in ch 2 space

1 dc in next st, *ch 1, sk 1 st, dc in next st* (repeat from * to * twice more) ch 1.

2 dc in top of ch 3 from Row 2. Turn.

Row 4.

Ch 3, 2 dc in 1st st.

Fpdc in 2nd st, *dc in ch space, fpdc in next st* (repeat from * to * 3 more times)

Dc in next st, fpdc in last st before ch 2 space.

2 dc in ch 2 space, ch 2, 2 dc in ch 2 space.

Fpdc in 1st st, dc in 2nd st, *fpdc in next st, dc in ch space* (repeat from * to * 3 more times)

Fpdc in next st, 3 dc in top of ch 3 from Row 3. Turn.

Row 5.

Ch 2, 2 sc in 1st st.

Sc in every st to centre ch 2 space.

2 sc in ch 2 space, ch 2, 2 sc in ch 2 space.

sc in every st to last st, 3 sc in top of ch 3 from Row 4. Turn.

Row 6.

Ch 3, 2 dc in 1st st.

Dc in every st to centre ch 2 space.

2 dc in ch 2 space, ch 2, 2 dc in ch 2 space.

Dc in every st to last st, 3 dc in top of ch 2 from Row 5. Turn.



Row 7.

Ch 3, 1 dc in 1st st, ch 1.

1 dc in next st, *ch 1, sk 1 st, dc in next st* (repeat from * to * 9 more times)

2 dc in ch 2 space, ch 2, 2 dc in ch 2 space

1 dc in next st, *ch 1, sk 1 st, dc in next st* (repeat from * to * 9 more times) ch 1.

2 dc in top of ch 3 from Row 6. Turn.

Row 8.

Ch 3, 2 dc in 1st st.

Fpdc in 2nd st, *dc in ch space, fpdc in next st* (repeat from * to * 11 more times)

Dc in next st, fpdc in last st before ch 2 space

2 dc in ch 2 space, ch 2, 2 dc in ch 2 space.

Fpdc in 1st st, dc in 2nd st, *fpdc in next st, dc in ch space* (repeat from * to * 11 more times)

Fpdc in next st, 3 dc in top of ch 3 from Row 7. Turn.

Row 9.

Ch 2, 2 sc in 1st st.

Sc in every st to centre ch 2 space.

2 sc in ch 2 space, ch 2, 2 sc in ch 2 space.

sc in every st to last st, 3 sc in top of ch 3 from Row 8. Turn.

Row 10.

Ch 3, 2 dc in 1st st.

Dc in every st to centre ch 2 space.

2 dc in ch 2 space, ch 2, 2 dc in ch 2 space.

Dc in every st to last st, 3 dc in top of ch 2 from Row 9. Turn.



Section 2

Row 11.

Ch 3, 2 dc in 1st st.

Fpdc in next 2 sts.

2 dc in next 2 sts, flower in next st, 2 dc in next to sts, fpdc in next 3 sts (repeat from * to * 3 more times)

2 dc in next 2 sts, flower in next st, 2 dc in last 2 sts before ch 2 space.

2dc in ch 2 space, ch 2, 2 dc in ch 2 space.

2 dc in next 2 sts, flower in next st, 2 dc in next to sts, fpdc in next 3 sts (repeat from * to * 3 more times)

2 dc in next to sts, flower in next st, 2 dc in next 2 sts, 2 fpdc in next 2 sts, 3 dc in top of ch 3 from Row 10. Turn.

Row 12.

Ch 3. 2 dc in 1st st, dc in next st.

3 bpdc in next 3 sts, 2 dc in next 2 sts, dc in top of flower st, 2 dc in next 2 sts (repeat from * to * 4 more times)

2 bpdc in last 2 sts before ch 2 space.

2 dc in ch 2 space, ch 2, 2 dc in chain 2 space.

2 bpdc in next 2 sts.

2 dc in next 2 sts, dc in top of flower st, 2 dc in next 2 sts, 3 bpdc in next 3 sts (repeat from * to * 4 more times)

Dc in next st, 3 dc in top of ch 3 from Row 11. Turn.

Row 13.

Ch 3. 2 dc in 1st st, 3 dc in next 3 sts, *fpdc in next 3 sts, 2 dc in next 2 sts, flower in next st, 2 dc in next 2 sts* (repeat from * to * 4 more times)

Fpdc in next 3 sts, dc in last st before ch 2 space.

2 dc in ch 2 space, ch 2, 2dc in ch 2 space.

Dc in next st, *fpdc in next 3 sts, 2 dc in next 2 sts, flower in next st, 2 dc in next 2 sts* (repeat from * to * 4 more times)

Fpdc in next 3 sts, dc in next 3 sts, 3 dc in top of ch 3 from Row 12. Turn.

Row 14.

Ch 3, 2 dc in 1st st, 5 dc in next 5 sts, * 3 bpdc in next 3 sts, 2 dc in next 2 sts, dc in top of flower st, 2 dc in next 2 sts* (repeat from * to * 4 more times)

Bpdc in next 3 sts, dc in next 3 sts.

2dc in ch 2 space, chain 2, 2 dc in ch 2 space.

Dc in next 3 sts *bpdc in next 3 sts, dc in next 2 sts, dc in top of flower st, 2 dc in next 2 sts* (repeat from * to * 4 more times)

Bpdc in next 3 sts, dc in next 5 sts, 3 dc in top of ch 3 from Row 13. Turn.



Row 15.

Ch 3, 2 dc in 1st st.

Fpdc in next 2 sts.

2 dc in next 2 sts, flower in next st, 2 dc in next to sts, fpdc in next 3 sts (repeat from * to * 5 more times)

2 dc in next 2 sts, flower in next st, 2 dc in last 2 sts before ch 2 space.

2dc in ch 2 space, ch 2, 2 dc in ch 2 space.

2 dc in next 2 sts, flower in next st, 2 dc in next to sts, fpdc in next 3 sts (repeat from * to * 5 more times)

2 dc in next to sts, flower in next st, 2 dc in next 2 sts, 2 fpdc in next 2 sts, 3 dc in top of ch 3 from Row 14. Turn.

Row 16.

Ch 3. 2 dc in 1st st, dc in next st.

3 bpdcc in next 3 sts, 2 dc in next 2 sts, dc in top of flower st, 2 dc in next 2 sts (repeat from * to * 6 more times)

2 bpdcc in last 2 sts before ch 2 space.

2 dc in ch 2 space, ch 2, 2 dc in chain 2 space.

2 bpdcc in next 2 sts.

2 dc in next 2 sts, dc in top of flower st, 2 dc in next 2 sts, 3 bpdcc in next 3 sts (repeat from * to * 6 more times)

Dc in next st, 3 dc in top of ch 3 from Row 15. Turn.

Row 17.

Ch 3. 2 dc in 1st st, 3 dc in next 3 sts, *fpdc in next 3 sts, 2 dc in next 2 sts, flower in next st, 2 dc in next 2 sts* (repeat from * to * 6 more times)

Fpdc in next 3 sts, dc in last st before ch 2 space.

2 dc in ch 2 space, ch 2, 2dc in ch 2 space.

Dc in next st, *fpdc in next 3 sts, 2 dc in next 2 sts, flower in next st, 2 dc in next 2 sts* (repeat from * to * 6 more times)

Fpdc in next 3 sts, dc in next 3 sts, 3 dc in top of ch 3 from Row 16. Turn.

Row 18.

Ch 3, 2 dc in 1st st, 5 dc in next 5 sts, * 3 bpdcc in next 3 sts, 2 dc in next 2 sts, dc in top of flower st, 2 dc in next 2 sts* (repeat from * to * 6 more times)

Bpdcc in next 3 sts, dc in next 3 sts.

2dc in ch 2 space, chain 2, 2 dc in ch 2 space.

Dc in next 3 sts *bpdcc in next 3 sts, dc in next 2 sts, dc in top of flower st, 2 dc in next 2 sts* (repeat from * to * 6 more times)

Bpdcc in next 3 sts, dc in next 5 sts, 3 dc in top of ch 3 from Row 17. Turn.



Row 19.

Ch 3, 2 dc in 1st st.

Fpdc in next 2 sts.

2 dc in next 2 sts, flower in next st, 2 dc in next to sts, fpdc in next 3 sts (repeat from * to * 7 more times)

2 dc in next 2 sts, flower in next st, 2 dc in last 2 sts before ch 2 space.

2dc in ch 2 space, ch 2, 2 dc in ch 2 space.

2 dc in next 2 sts, flower in next st, 2 dc in next to sts, fpdc in next 3 sts (repeat from * to * 7 more times)

2 dc in next to sts, flower in next st, 2 dc in next 2 sts, 2 fpdc in next 2 sts, 3 dc in top of ch 3 from Row 18. Turn.

Row 20.

Ch 3. 2 dc in 1st st, dc in next st.

3 bpdcc in next 3 sts, 2 dc in next 2 sts, dc in top of flower st, 2 dc in next 2 sts (repeat from * to * 8 more times)

2 bpdcc in last 2 sts before ch 2 space.

2 dc in ch 2 space, ch 2, 2 dc in chain 2 space.

2 bpdcc in next 2 sts.

2 dc in next 2 sts, dc in top of flower st, 2 dc in next 2 sts, 3 bpdcc in next 3 sts (repeat from * to * 8 more times)

Dc in next st, 3 dc in top of ch 3 from Row 19. Turn.



Section 3

Row 21.

Ch 2. 2 sc in 1st st.

Sc in every st to ch 2 space.

2 sc in ch 2 space, ch 2, 2 sc in ch 2 space.

Sc in every st to last st.

3 sc in top of ch 3 from Row 20. Turn.

Row 22.

Ch 3. 2 dc in 1st st.

Dc in every st to ch 2 space.

2 dc in ch 2 space, ch 2, 2 dc in ch 2 space.

Dc in every st to last st.

3 dc in top of ch 2 from Row 21. Turn.

Row 23.

Ch 3. Dc in 1st st, ch 1, dc in 2nd st, ch 1 *skip 1 st dc in next st, ch 1* (repeat from * to * until last 2 sts before ch 2 space)

Skip next st, dc in last st before ch 2 space

2 dc in ch 2 space, ch 2, 2 dc in ch 2 space.

dc in 1st st, ch 1, skip next st *dc in next st, ch 1, skip next st*(repeat from * to * until last 2 sts)

Dc in next st, ch1, 2 dc in top of ch 3 from Row 22. Turn.

Row 24.

Ch 3. 2 dc in 1st st. fpdc in 2nd st *dc in ch space, fpdc in next st* (repeat from * to * until last 2 sts before ch 2 space)

Dc in next st, fpdc in last st before ch 2 space

2 dc in ch 2 space, ch 2, 2 dc in ch 2 space.

Fpdc in 1st st, dc in next st, *fpdc in next st, dc in ch space* (repeat from * to * until last 2 sts)

Fpdc in next st, 3 dc in top of ch 3 from Row 23. Turn.

Row 25.

Ch 2. 2 sc in 1st st.

Sc in every st to ch 2 space.

2 sc in ch 2 space, ch 2, 2 sc in ch 2 space.

Sc in every st to last st.

3 sc in top of ch 3 from Row 24. Turn.



Row 26.

Ch 3. 2 dc in 1st st.

Dc in every st to ch 2 space.

2 dc in ch 2 space, ch 2, 2 dc in ch 2 space.

Dc in every st to last st.

3 dc in top of ch 2 from Row 25. Turn.

Row 27.

Ch 3. Dc in 1st st, ch 1, dc in 2nd st, ch 1 *skip 1 st dc in next st, ch 1* (repeat from * to * until last 2 sts before ch 2 space)

Skip next st, dc in last st before ch 2 space.

2 dc in ch 2 space, ch 2, 2 dc in ch 2 space.

dc in 1st st, ch 1, skip next st *dc in next st, ch 1, skip next st*(repeat from * to * until last 2 sts)

Dc in next st, ch1, 2 dc in top of ch 3 from Row 26. Turn.

Row 28.

Ch 3. 2 dc in 1st st. fpdc in 2nd st *dc in ch space, fpdc in next st* (repeat from * to * until last 2 sts before ch 2 space)

Dc in next st, fpdc in last st before ch 2 space.

2 dc in ch 2 space, ch 2, 2 dc in ch 2 space.

Fpdc in 1st st, dc in next st, *fpdc in next st, dc in ch space* (repeat from * to * until last 2 sts)

Fpdc in next st, 3 dc in top of ch 3 from Row 27. Turn.

Row 29.

Ch 2. 2 sc in 1st st.

Sc in every st to ch 2 space.

2 sc in ch 2 space, ch 2, 2 sc in ch 2 space.

Sc in every st to last st.

3 sc in top of ch 3 from Row 28. Turn.

Row 30.

Ch 3. 2 dc in 1st st.

Dc in every st to ch 2 space.

2 dc in ch 2 space, ch 2, 2 dc in ch 2 space.

Dc in every st to last st.

3 dc in top of ch 2 from Row 29. Turn.



Row 31.

Ch 3. Dc in 1st st, ch 1, dc in 2nd st, ch 1 *skip 1 st dc in next st, ch 1* (repeat from * to * until last 2 sts)

Skip next st, dc in last st before ch 2 space.

2 dc in ch 2 space, ch 2, 2 dc in ch 2 space.

dc in 1st st, ch 1, skip next st *dc in next st, ch 1, skip next st*(repeat from * to * until last 2 sts)

Dc in next st, ch1, 2 dc in top of ch 3 from Row 30. Turn.

Row 32.

Ch 3. 2 dc in 1st st. fpdc in 2nd st *dc in ch space, fpdc in next st* (repeat from * to * until last 2 sts before ch 2 space)

Dc in next st, fpdc in last st. before ch 2 space.

2 dc in ch 2 space, ch 2, 2 dc in ch 2 space.

Fpdc in 1st st, dc in next st, *fpdc in next st, dc in ch space* (repeat from * to * until last 2 sts)

Fpdc in next st, 3 dc in top of ch 3 from Row 31. Turn.



Section 4

Row 33.

Ch 2. 2 sc in 1st st.

Sc in every st to ch 2 space.

2 sc in ch 2 space, ch 2, 2 sc in ch 2 space.

Sc in every st to last st.

3 sc in top of ch 3 from Row 32. Turn.

Row 34.

Ch 3. Dc in 1st st, ch 1, dc in 2nd st, ch 1 *skip 1 st dc in next st, ch 1* (repeat from * to * until last 2 sts before ch 2 space)

Skip next st, dc in last st before ch 2 space.

2 dc in ch 2 space, ch 2, 2 dc in ch 2 space.

dc in 1st st, ch 1, skip next st *dc in next st, ch 1, skip next st*(repeat from * to * until last 2 sts)

Dc in next st, ch1, 2 dc in top of ch 3 from Row 33. Turn.

Row 35.

Ch 3. 2 dc in 1st st, dc in 2nd st, dc in ch space.

Flower in next st, dc in ch space, dc in next st, dc in ch space, dc in next st, flower in ch space, dc in next st, dc in ch space, dc in next st, dc in ch space (repeat from * to * until last 5 sts before ch 2 space)

Flower in next st, dc in ch space, dc in next 3 sts.

2 dc in ch 2 space, ch 2 2 dc in ch 2 space.

Dc in next 3 sts, flower in next st.

dc in ch space, dc in next st, dc in ch space, dc in next st, flower in ch space, dc in next st, dc in ch space, dc in next st, dc in ch space, flower in next st (repeat from * to * until last 3 sts)

Dc in ch space, dc in next st, 3 dc in top of ch 3 from Row 34. Turn.

Row 36.

Ch 3. Dc in 1st st, ch 1, dc in 2nd st, ch 1 *skip 1 st dc in next st, ch 1* (repeat from * to * until last 2 sts before ch 2 space)

Skip next st, dc in last st before ch 2 space

2 dc in ch 2 space, ch 2, 2 dc in ch 2 space.

dc in 1st st, ch 1, skip next st *dc in next st, ch 1, skip next st*(repeat from * to * until last 2 sts)

Dc in next st, ch1, 2 dc in top of ch 3 from Row 35. Turn.



Section 5

Row 37.

Ch 3. 2 dc in 1st st, dc in next st *ch 5, sk 2 dc, sc in next dc* (repeat from * to * until last 2 sts before ch 2 space)

Ch 3, 2 dc in ch 2 space, ch 2, 2 dc in ch 2 space, ch 3.

Sk 2 dc *sc in next dc, ch5, sk 2 dc* (repeat from * to * until last 2 sts)

Dc in next st, 3 dc in top of ch 3 from Row 36. Turn.

Row 38.

Ch 3. 2 dc in 1st st, ch 5, *sc picot in ch 5 space, ch 5* (repeat from * to * until ch 3 space)

Sc picot in ch 3 space, ch 2.

2 dc in ch 2 space, ch 2, 2 dc in ch 2 space.

Ch 2, sc picot in ch 3 space.

Ch 5, *sc picot in ch 5 space, ch 5* (repeat from * to * until last st)

3 dc in top of ch 3 from Row 37. Turn.

Row 39.

Ch 3. 2 dc in 1st st, ch 5, *sc picot in ch 5 space, ch 5* (repeat from * to * until centre ch 2 space)

2 dc in centre ch 2 space, ch 2, 2 dc in centre ch 2 space

Ch 5, *sc picot in ch 5 space, ch 5* (repeat from * to * until last st)

3 dc in top of ch 3 from Row 38. Turn.

Row 40.

Ch 3. 2 dc in 1st st, ch 3, *sc picot in ch 5 space, ch 5* (repeat from * to * until centre ch 2 space)

2 dc in centre ch 2 space, ch 2, 2 dc in centre ch 2 space

Ch 5, *sc picot in ch 5 space, ch 5* (repeat from * to * until last ch 5 space)

Ch 3, 3 dc in top of ch 3 from Row 39. Turn.

Row 41.

Ch 3. 2 dc in 1st st, ch 3, *sc picot in ch 5 space, ch 5* (repeat from * to * until centre ch 2 space)

2 dc in centre ch 2 space, ch 2, 2 dc in centre ch 2 space

Ch 5, *sc picot in ch 5 space, ch 5* (repeat from * to * until last ch 5 space)

Ch 3, 3 dc in top of ch 3 from Row 40. Turn.



Row 42.

Ch 3. 2 dc in 1st st, ch 3, * sc picot in ch 5 space, ch 5* (repeat from * to * until centre ch 2 space)
2 dc in centre ch 2 space, ch 2, 2 dc in centre ch 2 space
Ch 5, *sc picot in ch 5 space, ch 5* (repeat from * to * until last ch 5 space)
Ch 3, 3 dc in top of ch 3 from Row 41. Turn.

Row 43.

Ch 3. 2 dc in 1st st, dc in next 2 sts, dc in ch 3 space, *ch 3, 4 dc in next ch 5 space* (repeat from * to * until last ch 5 space)
Ch 2, 2 dc in centre ch 2 space, ch 2, 2 dc in centre ch 2 space, ch 2.
4 dc in next ch 5 sp, ch 3 (repeat from * to * until ch 3 space)
Dc in ch 3 space, dc in next 2 sts, 3 dc in top of ch 3 from Row 42. Turn.

Row 44.

Ch 3. 2 dc in 1st st, dc in next 5 sts, *ch1, sc in ch 3 space, ch 1, dc in next st, dc2tog, dc in next st* (repeat from * to * until last st before ch 2 space)
Ch 1, sc in ch 2 space, ch 1.
2 dc in centre ch 2 space, ch 2, 2 dc in centre ch 2 space.
Ch 1, sc in next ch 2 space, ch 1.
Dc in next st, dc2tog, dc in next st, ch 1, sc in ch 3 space, ch 1 (repeat from * to * until last ch 3 space)
Dc in next 5 sts, 3 dc in top of ch 3 from Row 43. Turn.

Row 45.

Ch 3, 2 dc in 1st st.
Sk 4 sts, 6 dc in next st.
6 dc in top of next dc2tog (repeat from * to * until last dc2tog before ch 2 space)
12 dc in centre ch 2 space.
6 dc in top of next dc2tog (repeat from * to * until last dc2tog)
Skip 3 dc, 6 dc in next st, skip 4 sts, 3 dc in top of ch 3 from Row 44. Turn.

Row 46.

Ch 2, 2 sc in 1st st, sc in every st until centre 12 dc fan.
Sc in next 4 sts, 3 sc in next st, ch 2, sk 2 sts, 3 sc in next st.
Sc in every st until last st, 3 sc in top of ch 3 from Row 45. Turn.



Section 6

Row 47.

Ch 3. Dc in 1st st, ch 1, dc in 2nd st, ch 1 *skip 1 st dc in next st, ch 1* (repeat from * to * until last 2 sts before ch 2 space)

Skip next st, dc in last st before ch 2 space

2 dc in ch 2 space, ch 2, 2 dc in ch 2 space.

dc in 1st st, ch 1, skip next st *dc in next st, ch 1, skip next st*(repeat from * to * until last 2 sts)

Dc in next st, ch1, 2 dc in top of ch 3 from Row 46. Turn.

Row 48.

Ch 3. 2 dc in 1st st. fpdc in 2nd st *dc in ch space, fpdc in next st* (repeat from * to * until last 2 sts before ch 2 space)

Dc in next st, fpdc in last st before ch 2 space.

2 dc in ch 2 space, ch 2, 2 dc in ch 2 space.

Fpdc in 1st st, dc in next st, *fpdc in next st, dc in ch space* (repeat from * to * until last 2 sts)

Fpdc in next st, 3 dc in top of ch 3 from Row 47. Turn.

Row 49.

Ch 2. 2 sc in 1st st.

Sc in every st to ch 2 space.

2 sc in ch 2 space, ch 2, 2 sc in ch 2 space.

Sc in every st to last st.

3 sc in top of ch 3 from Row 48.

DO NOT TURN

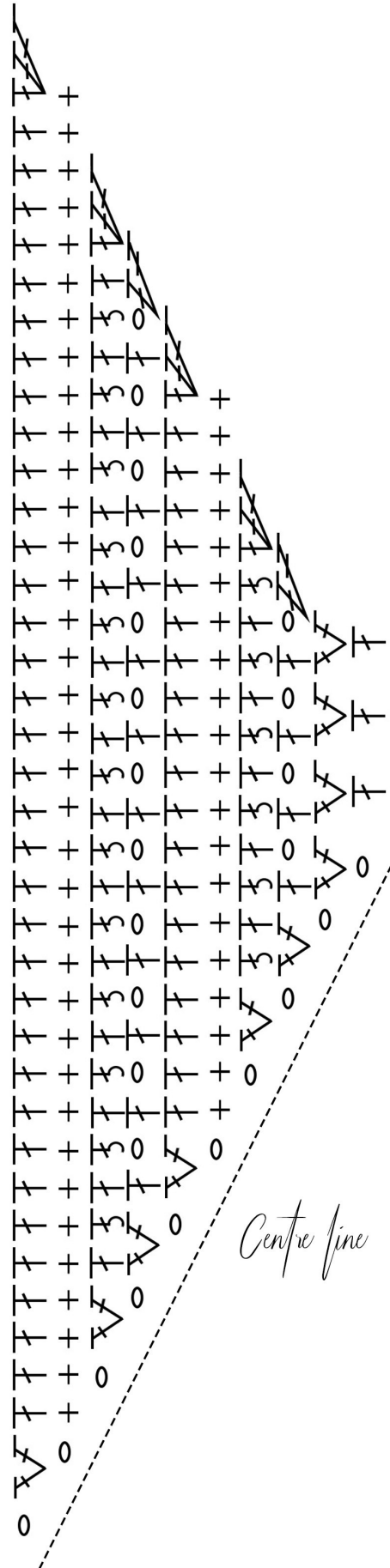
Continue along the top edge of shawl, placing 2 sc in the end of every row which started with a ch3/dc and 1 sc in the end of every row which started with a ch2/sc.

Slst into starting ch 2 st.



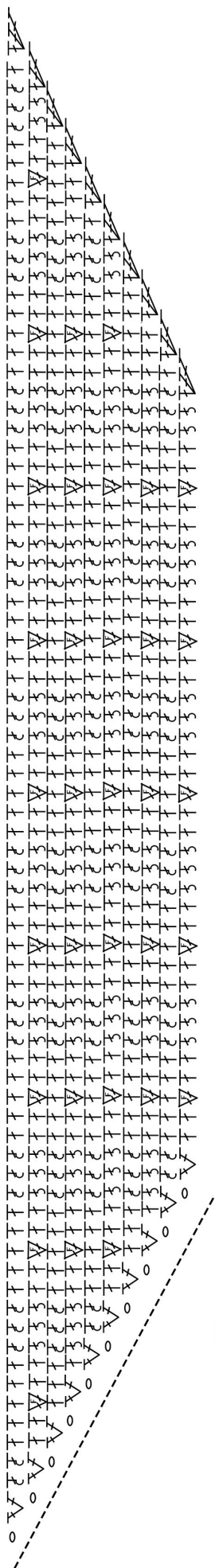
Section

Rows
1-10



Section 2

Rows
11-20



Centre line



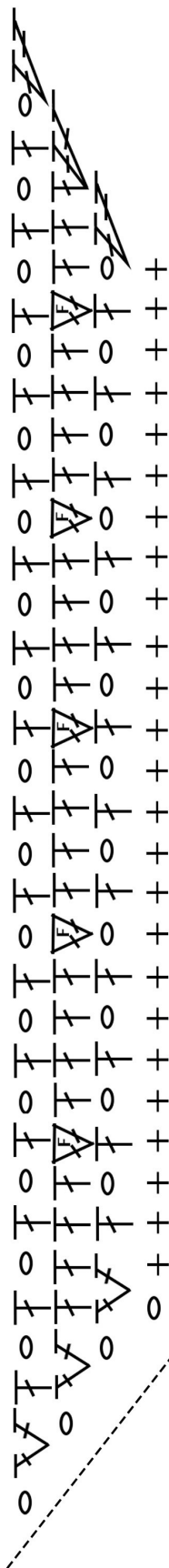
Section 3

Rows
21-32

Centre line

Section 4

Rows
33-36

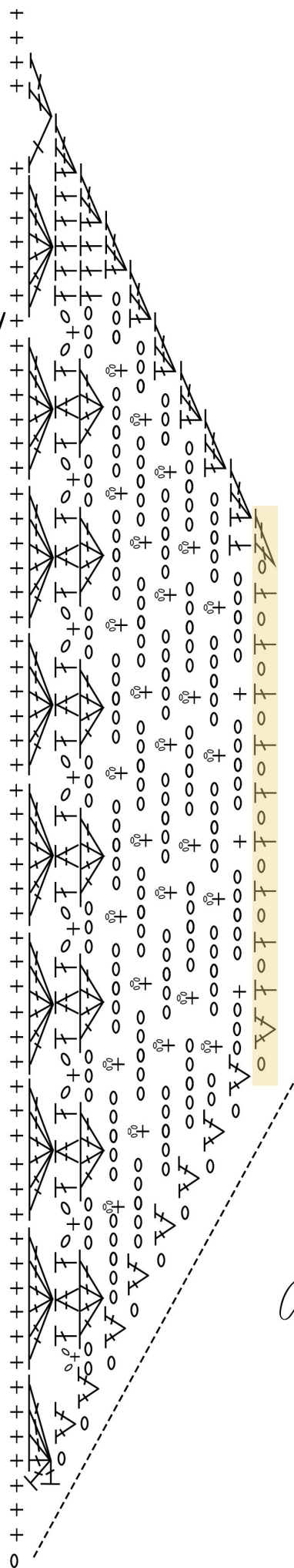


Centre line



Section 5

Rows
36-46



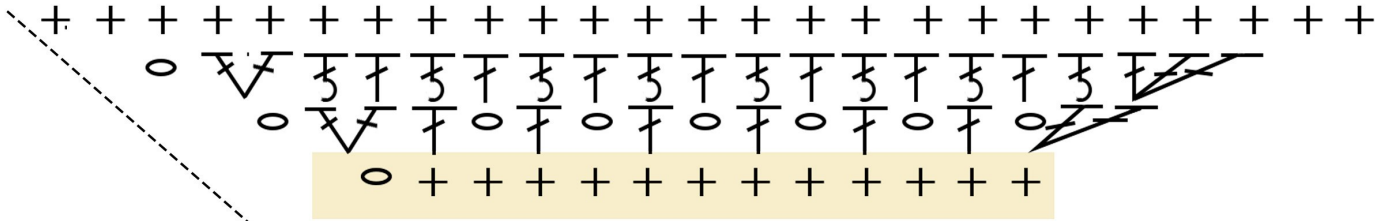
Watch out for Row 36! (it's just included in this chart so you can line up Row 37!)

Centre line



Section 6

Rows
47-49



Centre fine

Row 46 from
previous section

