

LET IT BE



Let it be is a perfect beach robe, fresh and colorful. Made of beautiful sky-colored **Cablè 5 Bio**, with an original meshwork with fans and embellished with playful fringes on the hem!



Yarn: CABLÈ 5 BIO col. 288

Crochet Hook: n. 2,5

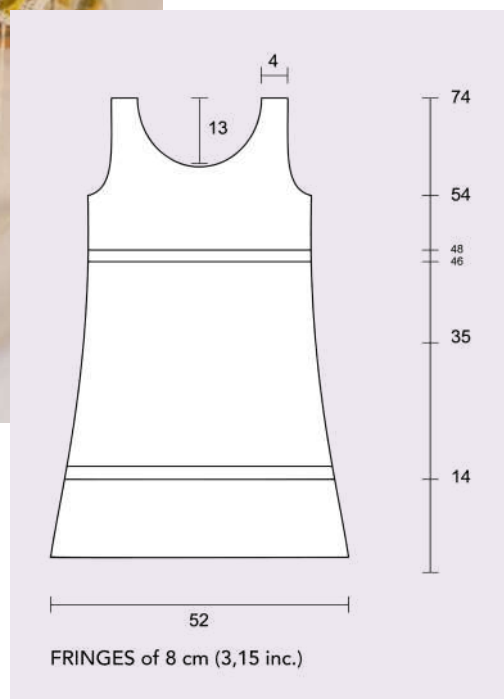
Weight: 245 g (5 gomitoli)

Stitches Used: Maglia Bassa, Rete con Ventagli, Punto Gambero.

Size: S

Gauge: 10 cm (4 in.) = 26 catenelle.

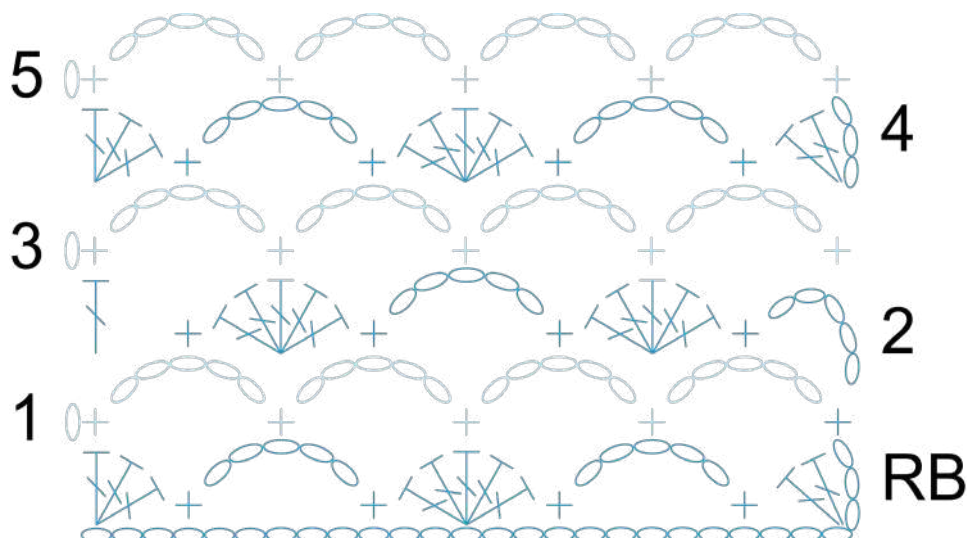
Size S: for each bigger or smaller size calculate in width 2 cm (0,75 in.) more or less, in our gauge it corresponds to 6 stitches; calculate in height 2 cm (0,75 in.) more or less, in our gauge it corresponds to 2 rounds.



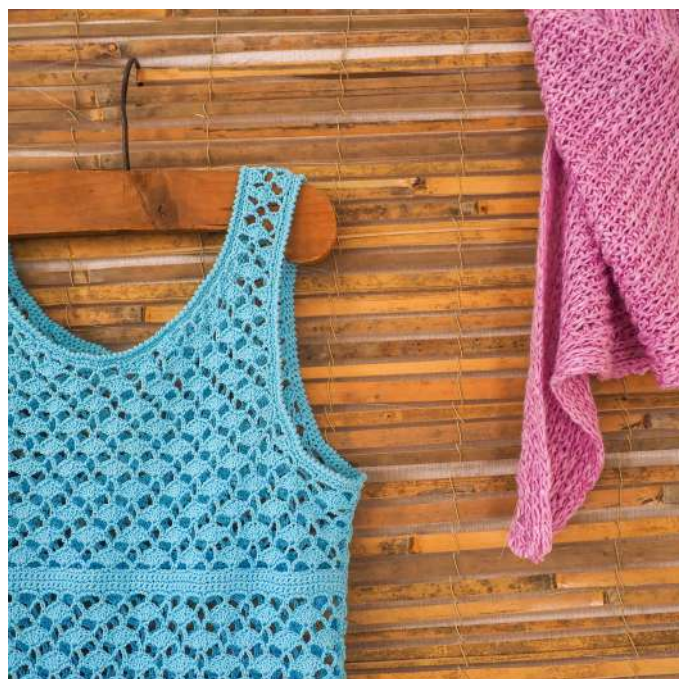
LET IT BE



Explanation Shell Mesh Stitch:



Knitting the Back: Using crochet hook n. 2,5, cast on 128 chains and work in **Double Crochet** for 2 rounds, then start working in **Shell Mesh Stitch**. At a total height of 14 cm (5,51 in.), make 4 rounds in **Double Crochet**, decreasing 8 stitches during the execution of the 4th round. Continue working in **Shell Mesh Stitch**. After 2 rounds, start leaving out the working on the first and last 4 stitches, every 6 rounds twice, every 2 rounds once. At a total height of 46 cm (18,11 in.), make 4 rounds in **Double Crochet**, then continue in **Shell Mesh Stitch**. At a total height of 54 cm (21,26 in.), for the armhole, leave out the working on the first and last 12 stitches, and continue leaving out the working on the first and last 4 stitches, after 2 round once. At a total height of 61 cm (24,01 in.), for the neckline, leave out the working on the 12 central stitches and continue the two parts separately, leaving out the working, every 2 rounds, on 4 stitches 3 times. In every shoulder strap, we will have 14 stitches. Continue the shoulder straps, at a total height of 74 cm (29,13 in.), fasten the thread.



Knitting the Front: Work as for the back.

Finishing: Sew sides and shoulder straps. To finish the back and front edge, make a round of headbands, working as follow: *Chain3, Double Crochet1*. To finish neckline and armholes, make a round in **Double Crochet** and a round in **Reverse Single Crochet**, then fasten the thread. Cut 16 cm (6,30 in.) long fringes, and apply them triple on the edge.

